

Flight Operations Regulations

Hochstubai-Liftanlagen GmbH ("the Company") is authorised to manage launching and landing areas in the Elfer flight area. The use of its facilities is subject to statutory provisions, these Flight Operations Regulations, and the Company's General Terms and Conditions (GTC). These regulations apply to launch, flight, landing, and training operations within the Elfer flight area. The aerodrome manager is the Parafly Stubaital GmbH flight school.

By using the Company's facilities, users accept these Flight Operations Regulations and the GTC.

The Company permits flight operations exclusively for non-motorised hang gliders and paragliders. Users must hold a valid Austrian civil pilot's licence or a recognised foreign equivalent. Student pilots in training may also use the facilities; however, they are strictly prohibited from flying independently without the supervision of a certified flight instructor.

Pilots must maintain owner liability insurance with a minimum coverage of EUR 1.5 million (750,000 SDR).

Use of the facilities is at the pilot's own risk and responsibility. The Company assumes no liability for accidents or damages.

Before launching, pilots must inform themselves about special hazards, protected areas, and any relevant instructions provided on the websites listed below.

<https://www.stubai.at/en/skiing-resorts/elferbahnen/summer/paragliding/>

<https://www.parafly.at/paragliding-fluggebiet-elfer-im-stubaital/>



General Information

Flight operations may only take place if there is no risk to persons or property. The respective launching and landing areas must be clear of people or obstacles. Pedestrians and property on neighbouring hiking trails, ski pistes, toboggan runs, and cross-country skiing trails must not be endangered in any way.

Only labelled, airworthy, and fully operational aircraft may be used. Aerobatics and flights with speed flyers or mini-wings are strictly prohibited.

Intermediate landings at launch sites are only permitted in emergency situations without exception. During launching, flight, and landing, due consideration must always be given to persons and property.

The Company may impose flight bans, during which no launches are permitted. Airborne pilots must proceed to the landing site as quickly as possible. Flight bans are indicated by a large orange cross at the landing site.

In the event of injury to persons, damage to aircraft, or any other form of damage, the local police station (Tel. 133) and the Company (Tel. +43 5226 2270) must be informed immediately.

Launching

Pilots must coordinate launches with each other. The Company may appoint launch managers, whose instructions must be followed.

Launch and landing areas may only be entered for launching and landing purposes. Otherwise, only launch managers and instructors are permitted in these areas.

Aircraft assembly and pre-flight checks must not interfere with flight operations. Launches are only permitted in turbulence-free wind conditions.

Launch site 1 - Elfer: This site is used in particular by student pilots as part of training and further education programmes, as well as by tandem pilots. In the event of overcrowding, independent paragliders are required to use other launch sites. In winter, this launch site is separated from the piste by a barrier and is therefore the only legal launch site in the flying area. This launch site is located right next to the cable car's Summit Station.

There are currently approx. 7 launch positions/slots available.

Launch site 2 - Hölltal: This launch site is located below the main launch site and has similar wind conditions. Only the Parafly Stubaital GmbH flying school is authorised to use this site. The launch site is a 3- to 5-minute walk from the cable car's Summit Station.

There are currently approx. 4 launch positions/slots available.

Launch site 3 - Wohnzimmer (lower end): Launch site for paragliders. Closed in winter. This launch site is a 5- to 10-minute walk from the cable car's Summit Station.

The cable runs to the left of the launch area as seen in flight direction. For flight safety reasons, there are therefore only approx. 6 launch positions/slots available.

Launch site 4 - Wohnzimmer (upper end): Launch site for paragliders. Closed in winter. Located about 15 to 20 minutes away, above the cable car's Summit Station.

There are currently approx. 3 launch positions/slots available.

Launch site 5 - Elferhütte: Launch site for paragliders. Closed in winter. Ascent from the cable car's Summit Station takes about 30 to 40 minutes on foot. There is a tree in the centre of the launch site. There are currently approx. 4 launch positions/slots – 2 to the left and 2 to the right of the tree.



During the winter months, launching is only permitted in the designated area. Consideration must be given to skiing operations.

Students may only carry out training flights once they have mastered launching on flat terrain. Flying schools must ensure that students have acquired the appropriate knowledge and skills on the practice slope.

Flying

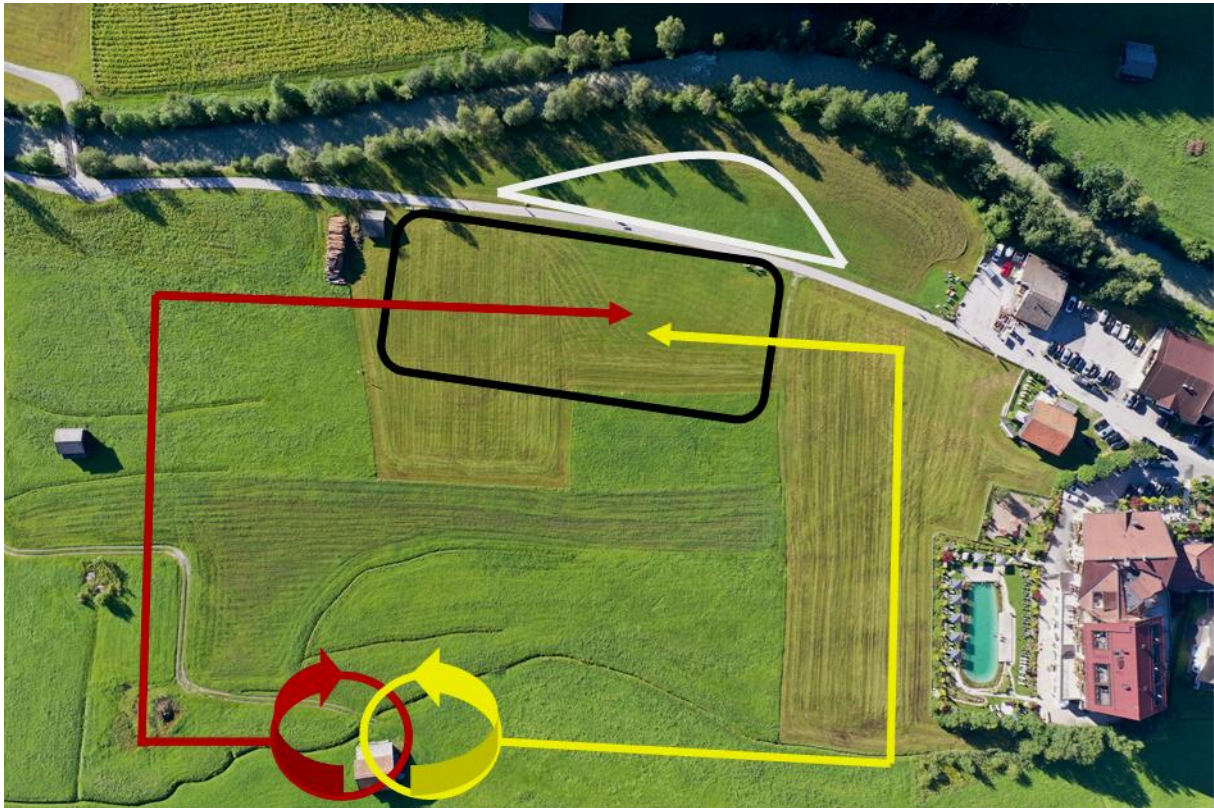
After launch, the airspace in front of and above the launch site must be widely avoided. The launch site, assembly area, the entire Summit Station premises, cable car facilities, ski lifts, power lines, ski slopes, cross-country skiing trails, toboggan runs, hiking trails, protected areas, and quiet zones must be flown over at a minimum distance of 50 metres. This safety distance also applies to the Valley Station, surrounding fields, and buildings in the landing area.

If helicopters are present in the airspace, flight operations must be suspended, and the airspace must be widely kept clear.

Night flights are prohibited. Landings must therefore be completed by ECET (end of civil evening twilight) at the latest.

Landing

The allocation of landing sites is binding.



Yellow: Left landing turn – valley winds
Red: Right landing turn – glacier winds
Black: Landing site
White: Dismantling site

Strong Wind Landing Allocation - With increasing valley winds, we recommend using the strong wind landing allocation when approaching the landing site from the direction of Innsbruck. Landing at the dismantling site is strictly prohibited.

During the entire landing manoeuvre, pilots must remain aware of other aircraft. Paragliders must always yield to hang gliders on the final approach.

After landing, pilots must be mindful of following hang gliders and paragliders. The landing site must be cleared immediately in the direction of the dismantling site. Gliders may only be dismantled at the designated dismantling site.

Training Courses

The flying grounds have been registered by the Aero Club FAA as a designated training and practice area for hang gliders and paragliders. Training operations and student pilots must be given priority. Instructions from flight school staff must be followed at all times.

School and training groups must register with the Company and the Parafly Stubaital GmbH flight school to ensure smooth operations.

The facilities may only be used with special authorisation.

Tandem Flights

Commercial tandem flights may only be carried out with the Company's approval.

Briefing

The Company strongly recommends attending a briefing at the Parafly Stubaital GmbH flight school to ensure safe flight operations.

For any questions, please contact the staff at Hochstubai-Liftanlagen GmbH at +43 5226 2270.
